

SEALJOINT

HYDROPHILIC SWELLING BUTYL RUBBER JOINT SEALING PROFILES

RECTANGULAR PROFILE: 11x27 mm

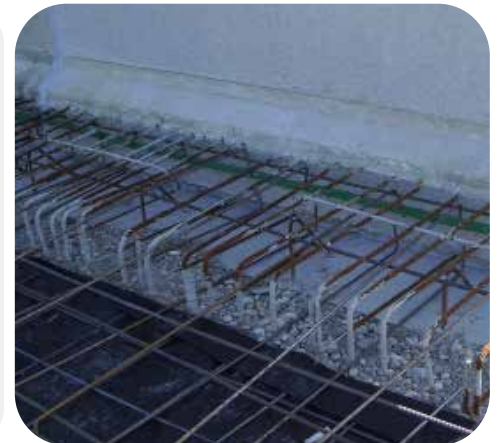
SQUARE PROFILE: 20x20 mm



SEALJOINT is a hydrophilic waterstop which swells to seal joints in structures that are in contact with pressurized or non-pressurized water. The waterstop is specially designed for delayed swelling. **SEALJOINT** profiles contain hydrophilic swellable synthetic resins that swell in contact with water or moisture and exert pressure to fill and seal voids. Due to their characteristics, these profiles remain unchanged over time even in the presence of running water and expand in a controlled fashion after about 24 hours, thus ensuring enough time for concrete hardening in order to avoid cracks.

ADVANTAGES

- ✓ Easy and quick to apply even by non-specialised personnel and in difficult jobsite conditions.
- ✓ Controlled swelling eliminates the risk of cracking in the structures where the product is applied.
- ✓ Dimensional stability after swelling.
- ✓ Prevents washout even in extreme operating conditions.
- ✓ **SEALJOINT** guarantees the sealing effect even in case of repeated cycles of presence and absence of water.



USES

SEALJOINT is recommended for:

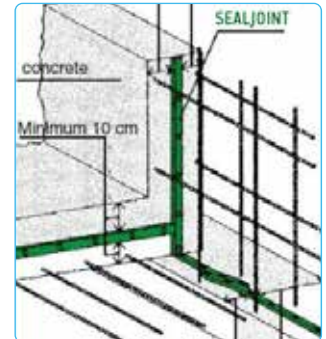
- ✓ Construction joints with prefabricated and/or cast-in-situ components.
- ✓ Watertight joints for prefabricated components and segments of tunnels, conduits and pipes of steel and concrete.
- ✓ Placement of fresh concrete over existing one or construction joints in underground structures and in the presence of an aquifer – multi-storey car parks, storage tanks for liquids, dams, basins, tunnels.
- ✓ Any situation in which it is necessary to stop water in a safe and permanent manner.

© Copyright 2012 - All rights reserved. - The information in this data sheet is based on our knowledge of the product at the time of publication. Changes may occur depending on the accuracy of every step of the application procedure over which we have no control. For this reason, our warranty only covers the quality and consistent compliance of the products with the specifications provided. This data sheet invalidates and supersedes the previous ones.

INSTALLATION

The profiles should be applied to clean, vibro-compacted, smooth and even surfaces. Place **SEALJOINT** at a distance of at least 8-10 cm from the external surface of cast concrete and fix with nails (15-20 cm spacing) or on a line of DRACOFLEX-P one-component polyurethane sealant. If a large area is involved, two parallel profiles are recommended to increase the margin of safety.

Junctions can be made by placing the ends of the profile side by side for about 5-6 cm.



PACKAGING AND STORAGE

SEALJOINT is available in the following sizes:

- 11x22 mm rectangular profiles, supplied in 6 x 8m rolls packed in boxes (48 m)
- 20x25 mm rectangular profiles, supplied in 6 x 5m rolls packed in boxes (30 m)
- 20x20 mm square profiles, supplied in 6 x 5m rolls packed in boxes (30 m)



TECHNICAL SPECIFICATIONS

Colour	Green
Available sizes	11 x 27 mm - 20 x 20 mm
Density - ISO 1183	1.20 ± 0.03 g/cm ³
Shore A hardness - ISO 868	40
Tensile strength - ISO 527	≥ 3.5 N/mm ²
Elongation at break - ISO 527	≥ 650 %
Expansion	≥ 400%
Resistance to hydrostatic pressure	12 bar (120 m water column)
Installation temperature - ISO 458/2	between +4 °C and +50 °C
Corrosiveness - Duration	Non-corrosive - Unlimited

Legal notes - SLCMP version of 01.03.2017

Draco Italiana s.p.a. has adopted the parameters indicated in this data sheet and the related standards for the calculation of the values and technical data contained herein.

Customers shall verify that this data sheet and the values indicated herein apply to their product batch and have not been superseded by later editions. If in doubt, verify that the sheet corresponds to the one available on the website www.draco-edilizia.it at the time the sales contract was executed and/or by previously contacting the Technical Department.

Any suggestions on the use of the Products provided by our personnel either orally or in writing upon the Customer's request do not constitute additional obligations to the purchase contract and do not imply a contractual obligation for the company. They are based on our experience and limited to the current state of practical and/or scientific knowledge. They are not binding for the client or for the installer. It is the Customer's responsibility to test our products and verify they are suitable for the type of application and use envisaged.