

# DURAFLOOR SG

## HIGH PERFORMANCE POLYURETHANE COATING FOR ANGLE FILLETS AND VERTICAL SURFACES

*Ideal for industrial use*



**DURAFLOOR SG** is a polyurethane-cement-based waterborne thixotropic matte finish colour coating specifically formulated to be applied by trowel in 3 to 9 mm layers. It is ideal for the protection of vertical surfaces and the creation of angle fillets or skirting boards, as well as for the protection of sewage pipes, plinths, manholes and drains. DURAFLOOR SG completes DURAFLOOR polyurethane-cement-based flooring system.

### ADVANTAGES

**DURAFLOOR SG is a polyurethane-cement-based thixotropic coating for the treatment of angle fillets and skirting boards. The coating has the following features:**

- ✓ **HIGH CHEMICAL RESISTANCE:** DURAFLOOR SG is resistant to a wide range of chemicals used in industrial processes (see chemical resistance table).
- ✓ **RESISTANCE TO HIGH TEMPERATURE:** DURAFLOOR SG is resistant to liquid spillage and accidental contact.
- ✓ **EXCELLENT RESISTANCE TO MECHANICAL STRESS:** DURAFLOOR SG is resistant to heavy traffic, shocks, impact and abrasion.
- ✓ **FAST INSTALLATION AND MINIMUM DOWNTIME:** DURAFLOOR SG is walkable after 8 hours from installation and becomes fully performing after 48 hours.
- ✓ **HYGIENE AND EASE OF CLEANING:** the coatings made with DURAFLOOR SG are easy to clean, inhibit the growth of bacteria and can withstand high-temperature washing.
- ✓ **RESISTANT TO MOISTURE:** DURAFLOOR SG tolerates the moisture of the substrate and therefore can be applied on surfaces that have not completely cured.
- ✓ **WATERPROOF:** DURAFLOOR SG does not absorb water.
- ✓ DURAFLOOR SG complies with the requirements of the Consolidated Law on safety and health at work (Italian Legislative Decree 81/08 and subsequent amendments).

### USES

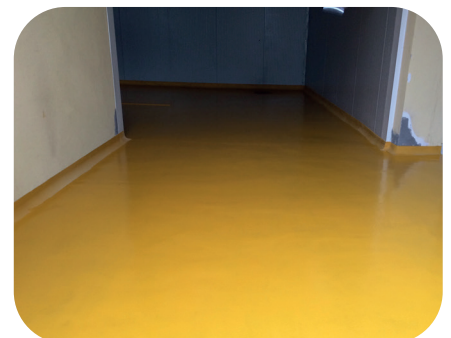
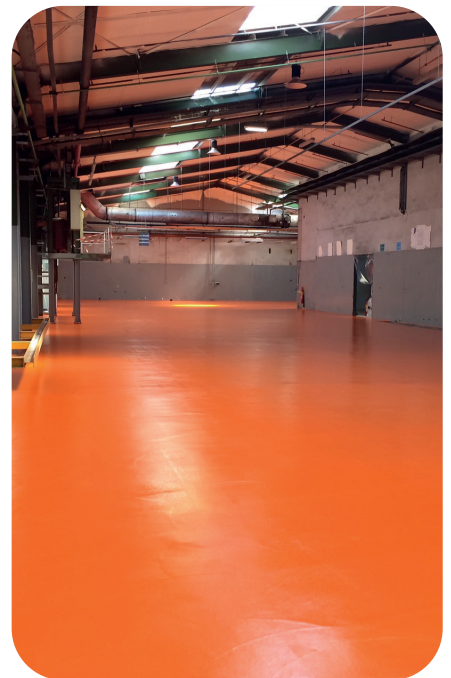
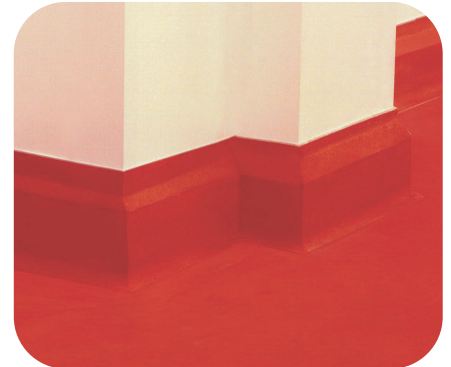
**DURAFLOOR SG** is ideal for food, pharmaceutical and chemical industries, and all plants where high resistance to chemicals, impact, high-temperature liquid spillage and washing is required, such as processing and storage areas subject to traffic.

- Areas where foodstuffs are present and that are subject to ISO standards and to Italian Legislative Decree 193/07 that enforces Regulation (EC) no. 852/2004 on the hygiene of foodstuffs (HACCP).

# DRACO

## FLOORING LINE

HIGH PERFORMANCE  
POLYURETHANE-CEMENT-  
BASED SYSTEMS



© Copyright 2012 - All rights reserved - The information of this technical data sheet actually comply with the present state of our best scientific knowledge. Depending on the accuracy of the various laying phases, for which we may not held liable, changes may also arise. Thus our warranty is only limited to the quality and durability of the products as supplied in compliance with their indications. This edition cancels and replaces the previous ones.

## SUBSTRATE PREPARATION

### SUBSTRATE REQUIREMENTS

Before applying DURAFLOOR SG verify that the substrate has a pull-off strength of at least 1.5 MPa and compressive strength of 25 MPa.

### CLEANING

- ▶ Remove all loose concrete by either mechanical chipping or pressure washing, taking care not to damage the structures.
- ▶ Remove stains, efflorescence or soaked-in stains of oil, grease, paint, lime, dust, dirt etc.
- ▶ Remove any trace of dust, dirt or any residue which may cause the coating to come off.

### PRIMING

After thoroughly preparing the substrate as indicated above, apply by roller a coat of **PRIMER E**, impregnation and adhesion booster resin at a rate of approx. 0.3 ÷ 0.4 kg/m<sup>2</sup> to facilitate adhesion of subsequent resin coats. **DURAFLOOR SG** shall be applied (fresh on fresh) approx. 40-50 minutes after applying the primer. If applied after 48 hours from primer application, you must first proceed with mechanical abrasion and primer reapplication.

## MIX PREPARATION

### COMPONENT PREPARATION

The three components must be at a temperature between +15 and +25°C.

Do not use only part of the components as this could cause errors in the mixing ratio, and result in incomplete or no hardening.

Premix the colour part before use. Add the hardener (PART B) to the colour resin (A+D) and mix using a low-speed agitator (300-400 rpm) for about 1-2 minutes until you get a homogeneous mix. Pour the mix into a rotary drum mixer and add the aggregate (PART C) little by little; mix for at least 3 minutes until the mix is smooth and free of lumps and has a uniform colour.

## COATING APPLICATION

### APPLICATION PROCEDURE

Apply **DURAFLOOR SG** on a clean substrate after applying **PRIMER E**, as indicated in the previous paragraph. Apply the mix on the surface of a substrate where the primer is still damp using a spatula with rounded corners (see image on the right).

It is also possible – and in some special cases it is even recommended (please contact our technical department) – to apply a protective layer of DRACOFLOOR SG (within 48 hours) and a protective final coat of DRACOFLOOR F.



### PRECAUTIONS

- Read the safety data sheet before using the product.
- The substrate must be at a temperature of at least +5°C.
- Ideal temperature of application is between +15 and +25°C.
- The use of forced air ventilation to promote evaporation is recommended.
- Wear goggles and rubber gloves both during working and when cleaning tools.
- Clean your tools right after application using DILUENTE ECO.



## HOT WEATHER PRECAUTIONS

- ▶ Store DURAFLOOR SG components in the shade.
- ▶ Work in the mildest hours of the day.
- ▶ Do not work at ambient temperatures above 35°C.



## COLD WEATHER PRECAUTIONS

- ▶ Store DURAFLOOR SG in a frost-free place.
- ▶ Do not apply the product if temperature is below -5 °C.
- ▶ Start to work in the hottest hours of the day and however when ambient temperature is at least 5°C.

## PACKAGING AND STORAGE

DURAFLOOR SG is packed in kits:

- 1.16 kg bag (A) + 1.11 kg bag (B) + 22.38 kg bag (C) + 0.45 kg colour part bag (D)

Do not store on the ground. Store the product in a dry and sheltered place at a temperature between +10°C and +30°C. Keep away from direct sunlight. Protect against frost. The resin and hardener components (PARTS A, B, D) keep their features unchanged for 12 months if properly stored in their original packaging, while PART C (aggregates) only for 6 months.



## AVAILABLE COLOURS



DURAFLOOR SG may yellow on the surface, in particular when exposed to UV rays. Light colours are even more subject to yellowing. Some chemicals may stain or fade the surfaces depending on contact duration, temperature and type of chemical. However, this does not affect the chemical resistance and mechanical strength of the product.

## CLEANING OF SURFACES AND ANGLE FILLETS MADE WITH DURAFLOOR SG

Regular and proper cleaning of the floor using adequate cleaners increases the life of the floor and keeps it unchanged over time, and also makes slip resistance stable. DURAFLOOR SG can be easily cleaned with standard cleaning techniques and cleaners.

For more information on floor cleaning, refer to the INSTALLATION AND MAINTENANCE MANUAL of DURAFLOOR by DRACO SpA.

## APPLICATION SPECIFICATIONS 20°C - 65% R.H.

WORKABILITY AT 20°C	20 minutes
OPENING TO FOOT TRAFFIC	12 hours
OPENING TO LIGHT TRAFFIC	24 hours
OPENING TO HEAVY TRAFFIC	48 hours
COMPLETE HARDENING	7 days
THEORETICAL CONSUMPTION	2 kg/m <sup>2</sup> per mm of thickness

The data above are obtained from lab testing in a controlled environment.

Slip resistance could decrease due to wear, contaminating agents and incorrect maintenance.

### Legal notes - SLCMP version of 01.03.2017

Draco Italiana s.p.a. has adopted the parameters indicated in this data sheet and the related standards for the calculation of the values and technical data contained herein.

Customers shall verify that this data sheet and the values indicated herein apply to their product batch and have not been superseded by later editions. If in doubt, verify that the sheet corresponds to the one available on the website [www.draco-edilizia.it](http://www.draco-edilizia.it) at the time the sales contract was executed and/or by previously contacting the Technical Department.

Any suggestions on the use of the Products provided by our personnel either orally or in writing upon the Customer's request do not constitute additional obligations to the purchase contract and do not imply a contractual obligation for the company. They are based on our experience and limited to the current state of practical and/or scientific knowledge. They are not binding for the client or for the installer. It is the Customer's responsibility to test our products and verify they are suitable for the type of application and use envisaged.

Due to the nature of the product, it is not possible to guarantee perfect colour consistency between batches. Nonetheless, this does not affect in any way the characteristics and performances of the product. It is recommended to use only paints from the same production batch on adjacent surfaces. To avoid any colour differences, check that colour is correct and of the same batch number before applying the product.