

DRACOBIT

PREMIX PLUGGING AGENT TO LAY SEMI-FLEXIBLE BITUMINOUS-CEMENT FLOORING

DRACOBIT® SYSTEM



DRACOBIT® is a special premixed product based on inorganic components and admixtures used to prepare superfluid, shrinkage-compensated grout. Forming the base of the **DRACOBIT®** system, it is used to plug the bituminous concrete layers for creating semi-flexible bituminous-cement pavement. The high chemical and mechanical resistance of the premixed product ensures the outstanding performance of flooring made with the **DRACOBIT®** system.

BENEFITS

- ✓ **NO JOINTS, MAXIMUM DURABILITY:** By eliminating the most common weakness causing flooring degradation, **DRACOBIT®** enhances surface resistance and reduces possible causes of deterioration.
- ✓ **FLEXIBLE AND STRONG:** **DRACOBIT®** combines the flexibility of the bituminous surface and the high mechanical resistance of the cement mortar.
- ✓ **EXCELLENT RESISTANCE TO STATIC AND DYNAMIC LOADS:** **DRACOBIT®** is ideal for work on large surfaces exposed to heavy traffic, dynamic stresses and aggressive environment.
- ✓ **QUICK TO LAY:** **DRACOBIT®** ensures very fast laying times and it is also ideal for maintenance and restoration works in not easily accessible areas.
- ✓ **ACCESSIBLE AFTER ONLY 48 HRS:** **DRACOBIT®** avoids inconveniences caused by an interruption of vehicular and pedestrian traffic. Indeed, after just 48 hours the flooring is open to traffic.
- ✓ **RESISTANT TO FREEZE-THAW CYCLES:** **DRACOBIT®** does not undergo modification even over large temperature ranges, from - 50°C to + 90°C.
- ✓ **THIN LAYER:** Thin layers from 3-6 cm allow the restoration of deteriorated existing floors.
- ✓ **EXCELLENT COST-PERFORMANCE RATIO:** Thanks to its high yield and ease of execution, **DRACOBIT®** is ideal for restoring existing flooring at a low cost.
- ✓ **FSOUND ABSORPTION AND ACOUSTIC COMFORT:** **DRACOBIT®** reduces rolling road noise thus considerably improving the acoustic comfort.



AREAS OF APPLICATION

DRACOBIT® is ideal for creating new semi-flexible bituminous-cement flooring or restoring deteriorated existing flooring of:

- ✓ Logistical Areas exposed to frequent and heavy traffic (squares, rest areas, parking lots, ports, airport runways, motorway toll-booths, cycle and pedestrian paths, etc.)
- ✓ Areas exposed to frequent washing and freeze-thaw cycles.
- ✓ Highly critical and not easily accessible areas (e.g. galleries and motorway junctions).

SUBSTRATES PREPARATION

DETERIORATED EXISTING PAVEMENT OF CONCRETE OR ASPHALT CONCRETE

- ▶ Mill the deteriorated layer of existing flooring.
- ▶ Impregnate the substrate with a bituminous primer.
- ▶ Lay an asphalt drainage mat 3 to 6 cm thick.

NEW PAVEMENT

- ▶ The prior application of a bituminous binder is sufficient in the case of new pavement.



Lay an asphalt drainage mat

APPLICATION OF THE PLUGGING AGENT

GROUT PREPARATION

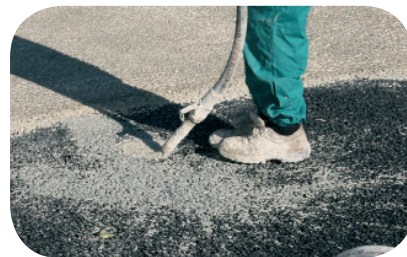
Pour **DRACOBIT** in the continuous mixer and adjust the mixing water until the fluidity required for a correct saturation of the drainage mat is achieved ($6 \div 6.4$ l per 20 kg bag depending on the porosity); the mix shall be well-blended, uniformly coloured and free of lumps

HOW TO USE

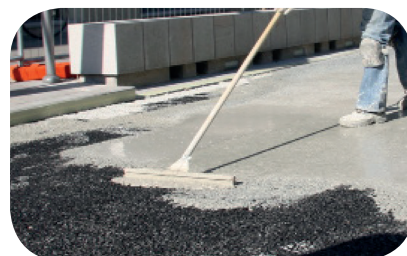
- Apply **DRACOBIT** plugging agent by pumping and then laying the product on the bituminous substrate by a rubberized spatula which promotes its uniform application on the entire surface.
- The complete absorption by the substrate occurs when the **total saturation of the drainage** mat thickness is achieved, resulting in a product consumption of about 5 kg/m² per cm of thickness of drainage layer; it may therefore be necessary to apply more "coats" up to complete saturation.
- The pavement is accessible after just 48 hours.

CURING

In hot and/or ventilated areas it is recommended to apply the curing compound PROBETON CURING N to promote the correct curing.



Saturation of the drainage mat



Laying DRACOBIT by a rubberized spatula

PACKAGING AND STORAGE

DRACOBIT is packaged in:

- 20 kg bags

If the product is stored properly in its original packaging, indoors in a dry location, it maintains its original features for one year.



RECOMMENDATIONS FOR HOT CLIMATES

- ▶ Do not perform work during the hottest hours of the day;
- ▶ do not work at temperatures higher than 35°C.



RECOMMENDATIONS FOR COLD CLIMATES

- ▶ Do not apply at temperatures lower than 5 °C;
- ▶ start work during the hottest hours of the day.

FEATURES AND APPLICATION DATA

APPEARANCE	Powder
COLOUR	Gray
MIXING WATER	30 ÷ 32% equal to approx. 6 ÷ 6.4 l per 20 kg bag
DENSITY OF MIX	1955 kg/m ³
PACKAGING	20 kg bag
STORAGE	12 months
CONSUMPTION	4 ÷ 5 kg/m ² per mm of thickness (drainage layer)
WALKABILITY	36 hours
ACCESSIBLE TO VEHICLES	48 hours

Times can vary depending on the substrate temperature and thermo-hygrometric environmental conditions.

Unless otherwise specified the above values are indicative and calculated at a temperature of 23 °C and relative humidity of 65 %.

PRODUCT PERFORMANCE +20°C - 30% MIXING WATER

BULK VOLUME	48 hours	1910 kg/m ³
	7 days	1953 kg/m ³
	28 days	1958 kg/m ³
FLEXURAL STRENGTH	48 hours	2,6 MPa
	7 days	4,8 MPa
	28 days	5,5 MPa
COMPRESSIVE STRENGTH	48 hours	9,4 MPa
	7 days	27,1 MPa
	28 days	34,6 MPa
DYNAMIC MODULUS OF ELASTICITY OF A FLEXIBLE FLOORING MADE WITH DRACOBIT (*)	average value according to UNI EN 12697 26	10843,16 MPa

(*) A test was carried out on samples of a flooring made using Dracobit. The test was carried out in our laboratory in Tribiano (MI) according to UNI EN 12697-26.

Legal notice - SLCMP version dated 01.03.2017

In the technical specifications herein, Draco Italiana s.p.a. used the indicators therein specified, with the relevant standards.

Please check if this Sheet and the figures therein contained apply to the product batch you are interested in or if they have been overridden by any later release. If in doubt, check whether this Sheet matches the one applicable at the time of finalising the sales agreement, at www.draco-edilizia.it, and/or contact our Engineering Department.

No advice provided by our staff, either verbally or in writing at your request, about the potential applications of the Products shall be binding under the sales agreement or shall be considered an integral part of the agreement. Such advice is based on our experience and on the best available practical and/or scientific knowledge; as such, it shall not be binding or conditional on the buyer or user. Please try our products first to find out whether they are fit for your intended use or application; in any case, you shall be solely responsible for your choice.