

# BITUMFLEX COLOR

PROTECTIVE COLOUR COATING FOR ASPHALT AND BITUMEN AND CONCRETE PAVEMENTS



**BITUMFLEX COLOR** is an aqueous emulsion coating based on acrylic resins for the protection and waterproofing of bituminous and concrete floors in urban and pedestrian areas. **BITUMFLEX COLOR** is ideal for surfaces of car parks, squares, cycle lanes and footpaths. The product makes the pavement more resistant to wear, UV rays and chemical attack.

## BENEFITS

**BITUMFLEX COLOR** prevents the migration of bituminous binders and heat accumulation caused by sunlight. It protects the surfaces and:

- ✓ increases resistance to abrasion, UV rays, fuels and lubricants;
- ✓ reduces disintegration, breakage and swelling of the bituminous or concrete surfaces;
- ✓ protects asphalt pavements from sudden temperature changes;
- ✓ increases durability;
- ✓ improves the aesthetics of pavement and reduces the environmental impact thanks to a variety of colours;
- ✓ eliminates the odour of bitumen.

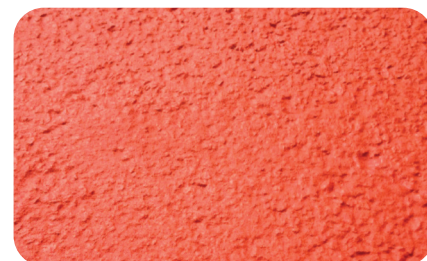
## USES

**BITUMFLEX COLOR** is specially formulated for the finish and protection of bituminous conglomerate or concrete surfaces in urban and pedestrian areas, such as:

- ✓ squares;
- ✓ avenues and bus lanes;
- ✓ footpaths and cycle lanes;
- ✓ sports facilities.

## SUBSTRATE PREPARATION

- ▶ Before applying **BITUMFLEX COLOR** clean the surface and remove any oil, grease and flaking parts. **BITUMFLEX COLOR** can be applied on old or new asphalt in good condition and on concrete previously primed with ACRIPRIMER, in variable consumption depending on the absorption of the substrate.



© Copyright 2012 - All rights reserved - The information in this data sheet is based on our knowledge of the product at the time of publication. Changes may occur depending on the accuracy of every step of the application procedure over which we have no control. For this reason, our warranty only covers the quality and consistent compliance of the products with the specifications provided. This data sheet invalidates and supersedes the previous ones.

## APPLICATION

**BITUMFLEX COLOR** can be diluted with water up to 30%. The product can be applied manually by rubber trowel on a dry and clean surface. At least two coats should be applied until saturation is reached. Minimum total consumption is approx. 2.0 kg/m<sup>2</sup> depending on substrate porosity. It is recommended to apply the product at a temperature below +10°C.

## PACKAGING AND STORAGE

**BITUMFLEX COLOR** is supplied in:

- 52 kg metal drums.

If stored properly in original unopened packaging in dry conditions with temperatures of at least +5 °C, the product maintains its characteristics for 12 months. Frost-sensitive.



## PRECAUTIONS

- ▶ Wear rubber gloves and safety glasses when applying the product and cleaning your tools.
- ▶ If you apply the product at a low temperature, store it in a heated place for the previous 36 hours.
- ▶ Forced-air ventilation should be provided in the workplace to boost evaporation.
- ▶ Clean your tools with water right after applying the product.
- ▶ Clean the surfaces with a neutral detergent.

## PRODUCT CHARACTERISTICS

APPEARANCE	liquid
AVAILABLE COLOURS	red, green, grey, other colors on request
SPECIFIC GRAVITY	1.64 ± 0.1 kg/dm <sup>3</sup>
NON-VOLATILE MATTER BY MASS	75 ± 0.5%
NON-VOLATILE MATTER BY VOLUME	59 ± 0.5%
CONTENT AT 450°C	61 ± 0.5%
BROOKFIELD VISCOSITY (with Brookfield viscometer, spindle no.6, 10 rpm)	90,000 mPa·s ± 2,000
pH	8 ± 1%
PACKAGING	52 kg drum
SHELF-LIFE	12 months
STORAGE TEMPERATURE	+3 °C to +40 °C

## APPLICATION SPECIFICATIONS at +23 °C and 50% R.H.

APPLICATION TEMPERATURE	+10 °C to +40 °C
SUBSTRATE TEMPERATURE	+5 °C to +50 °C
RELATIVE HUMIDITY	max 90%
DRYING TIME	set-to-touch: 1 hour
	tack-free: 2 hours
	dry hard: 4 hours
FOOT TRAFFIC	at least 4 hours from surface drying
VEHICULAR TRAFFIC	at least 24 hours from surface drying
CONSUMPTION (2-3 COATS)	1.5 ± 1.8 kg/m <sup>2</sup> min. recommended - dependig on substrate

Workability and overcoating times vary depending on environmental conditions. The times above are indicative and calculated at a temperature of +23 °C and relative humidity of 50%.

### Legal notes - SLCMP version of 01.03.2017

Draco Italiana s.p.a. has adopted the parameters indicated in this data sheet and the related standards for the calculation of the values and technical data contained herein.

Customers shall verify that this data sheet and the values indicated herein apply to their product batch and have not been superseded by later editions. If in doubt, verify that the sheet corresponds to the one available on the website [www.draco-edilizia.it](http://www.draco-edilizia.it) at the time the sales contract was executed and/or by previously contacting the Technical Department.

Any suggestions on the use of the Products provided by our personnel either orally or in writing upon the Customer's request do not constitute additional obligations to the purchase contract and do not imply a contractual obligation for the company. They are based on our experience and limited to the current state of practical and/or scientific knowledge. They are not binding for the client or for the installer. It is the Customer's responsibility to test our products and verify they are suitable for the type of application and use envisaged.

Due to the nature of the product, it is not possible to guarantee perfect colour consistency between batches. Nonetheless, this does not affect in any way the characteristics and performances of the product. It is recommended to use only paints from the same production batch on adjacent surfaces. To avoid any colour differences, check that colour is correct and of the same batch number before applying the product.